



THE DOMINION

43A Sarat Bose Road

DISPLAY OUTLETS | OFFICE SPACES

www.rera.wb.gov.in | WBRERA/P/KOL/2023/000090



9073 66 55 99

MODERN
PROPERTIES



Inspiring spaces fuel great ideas and foster good business. The Dominion by PS Group has been conceptualized to cater to modern business needs. An amalgamation of intelligent design and enhanced space efficiency, this new-age landmark is meant for the astute.

Make a mark with uniquely designed commercial spaces at a prime location.

A three sided glass façade edifice on Sarat Bose road, one of the major thorough fares of the city. It makes an excellent destination for display outlets and modular showrooms. Or an awe-inspiring workspace that ensures great connectivity with eminent retail landmarks and business services just a stone's throw away. The architecture also guarantees ample natural light making the working environment welcoming and positive.



9073 66 55 99

MODERN RNN
PROPERTIES

LOCATION

43A, Sarat Bose Road, Kolkata

CLUBS

Punjab Club	900 m
Hindusthan Club	1.1 km
Saturday Club	1.6 km

COMMUTE

Minto Park Crossing	1 km
Netaji Bawan Metro	1.1 km
Rabindra Sadan Metro	1.6 km

FINANCIAL INSTITUTION

SBI	260 m
ICICI Bank	800 m
HDFC Bank	1 km

MALLS

Forum	800 m
Quest	2.4 km



* Map not to scale



9073 66 55 99

MODERN
PROPERTIES

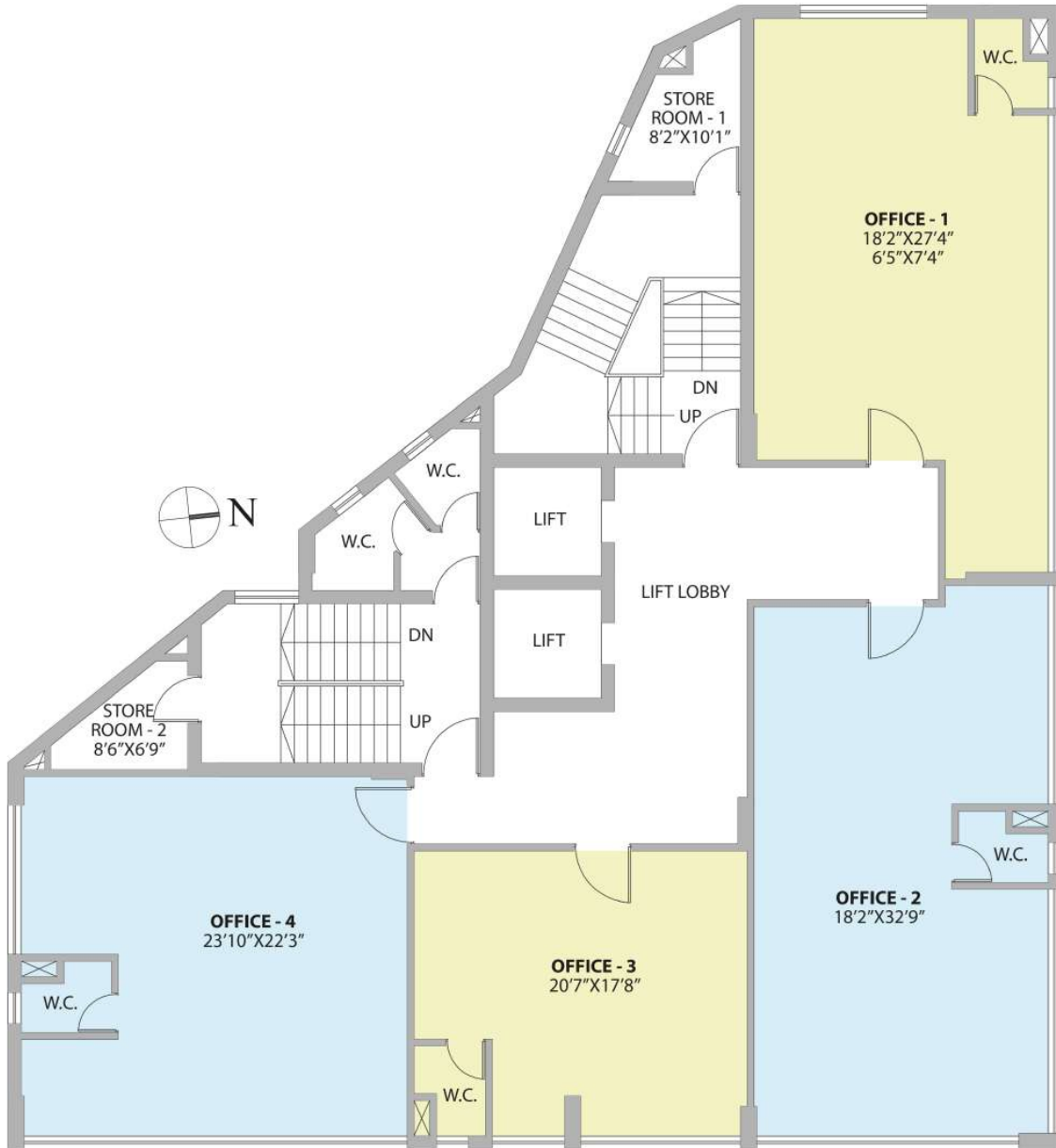
SITE PLAN



9073 66 55 99

MODERN RNN
PROPERTIES

FLOOR PLAN

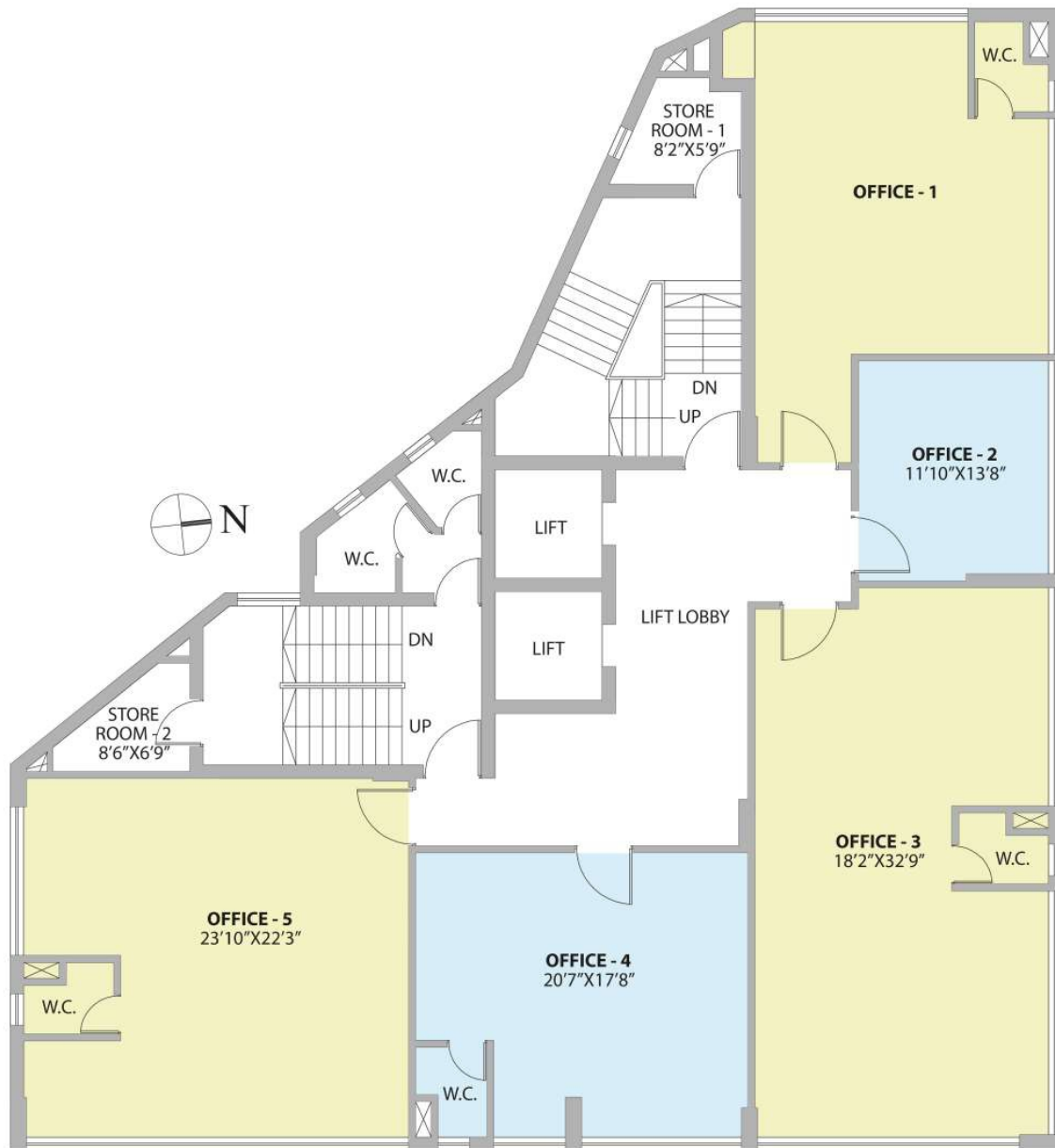


**FLOOR PLAN
(3RD - 7TH FLOOR)**

UNIT	CARPET AREA sq.ft.
Office 1	538
Store 1	54
Office 2	601
Office 3	360
Office 4	526
Store 2	40



FLOOR PLAN



**FLOOR PLAN
(2ND FLOOR)**

UNIT	CARPET AREA sq.ft.
Store 1	44
Office 2	159
Office 3	608
Office 4	360
Office 5	536
Store 2	40

